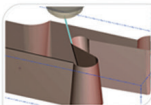
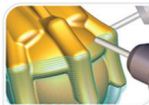
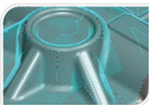


Mastercam X⁵

***Files and
Mastercam***



World Class Machining

Files and Mastercam

October 2010

Be sure you have the latest information!

Information might have been changed or added since this document was published. Contact your local Reseller for the latest information.

Mastercam® X5 Files and Mastercam

Date: October 2010

Copyright © 2010 CNC Software, Inc.— All rights reserved.

First Printing: October 2010

Software: Mastercam X5

Part Number: X5-PDF-TUT-FM

TERMS OF USE

Use of this document is subject to the Mastercam End User License Agreement. A copy of the Mastercam End User License Agreement is included with the Mastercam product package of which this document is part. The Mastercam End User License Agreement can also be found at:

www.mastercam.com/legal/licenseagreement/

Contents

.....

- Introduction 1**
 - ▶ Tutorial Goals..... 1
 - ▶ Before You Begin..... 1
 - ▶ If You Need More Help..... 3
 - ▶ Additional Documentation..... 3
 - ▶ 4
- 1. Opening Files 5**
 - ▶ Lesson Goals..... 5
 - ▶ Exercise 1: Opening a Mastercam Version 9 File..... 5
 - ▶ Exercise 2: Opening Other File Types 6
 - ▶ Exercise 3: Setting the Default Editor 8
 - ▶ Exercise 4: Importing Multiple Files..... 11
- 2. Saving Files 15**
 - ▶ Lesson Goals..... 15
 - ▶ Exercise 1: Saving Patterns (Save Some)..... 15
 - ▶ Exercise 2: Setting Up AutoSave and Backup..... 16
- 3. Exporting Files..... 21**
 - ▶ Lesson Goals..... 21
 - ▶ Exercise 1: Exporting a single file 21
 - ▶ Exercise 2: Exporting multiple files 23
- Conclusion..... 24**

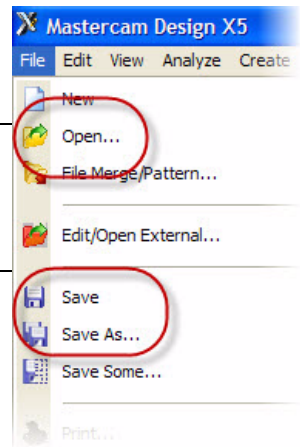
INTRODUCTION

A core function of most software is the ability to save and load files. Mastercam not only saves and loads its own file types, but also many other common file formats, including, but not limited to, the following:

- | | |
|---------------------|----------|
| ▪ SolidWorks | ▪ CATIA |
| ▪ AutoCAD | ▪ IGES |
| ▪ Parasolid | ▪ Pro/E |
| ▪ Solid Edge | ▪ Alibre |
| ▪ Autodesk Inventor | ▪ Cadkey |
| ▪ SpaceClaim | ▪ Rhino |

Loading and saving native Mastercam files is as easy as selecting one of the file commands, shown to the right. Opening and saving other types of files, although the files must be converted, is almost as easy.

Note: The Mastercam folder structure has changed with the current version. Please see the Mastercam X5 Quick Reference Card Folders PDF in your \Documentation folder for more information about file locations.



Tutorial Goals

- Open older Mastercam files.
- Open files from other software packages such as SolidWorks®.
- Select a default editor for external (non-Mastercam) files.
- Save selected geometry to a file.
- Set up Mastercam to save and backup files automatically.
- Export Mastercam files to different file types.

Before You Begin

This is a module of the *Mastercam Getting Started Tutorial Series*. The series introduces general Mastercam functions and teaches basic skills for getting started with Mastercam. Other tutorial series include:

- *Focus Series*: Focuses on a specific Mastercam feature—for example, Setup Sheets or FBM Drill, and teaches basic and advanced skills.
- *Exploring Series*: Explores a single Mastercam product—for example, Mill, Solids, or Wire, and teaches in-depth skills for working with the product.

The Mastercam tutorial series is in continual development, and we will add modules as we complete them. For information and availability, please contact your local Mastercam Reseller.



IMPORTANT: Screen colors in the tutorial pictures were modified to enhance image quality; they may not match your Mastercam settings or the tutorial results. These color differences do not affect the lesson or the exercise results.

General Tutorial Requirements

All Mastercam tutorials have the following general requirements:

- You must be comfortable using the Windows® operating system.
- The tutorials cannot be used with Mastercam Demo/Home Learning Edition (HLE). The Demo/HLE file format (EMCX) is different from Mastercam (MCX), and basic Mastercam functions, such as file conversions and posting, are unavailable.
- Each lesson in the tutorial builds on the mastery of preceding lesson's skills. We recommend that you complete them in order.
- *Focus Series* and *Exploring Series* tutorials require, at minimum, a mastery of the basic Mastercam skills taught in the *Getting Started Series* modules. A general knowledge of machining principals and practices is also required.
- You must have a seat of Mastercam X5 Design or higher to complete most of the tutorials in the *Getting Started Series*.
- The *Basic 2D Machining* module in the *Getting Started Series* requires, at minimum, a seat of Mill Entry or Router Entry.
- The *Basic 3D Machining* module in the *Getting Started Series* requires Mill Level 3 or Router Pro.
- Additional files may accompany a tutorial. Unless the tutorial provides specific instructions on where to place these files, store them in a folder that can be accessed from the Mastercam workstation, either with the tutorial or in any location that you prefer.
- The *Getting Started Series* tutorials are available in an Adobe® Flash® compatible video format. Additional tutorial videos may also be available. Contact your local Mastercam Reseller for more information.
- You must install Adobe Flash Player to display tutorial videos. You can download Adobe Flash Player from www.adobe.com.
- You must configure Mastercam to work in metric units. Complete the instructions in the following section **Preparing for a Tutorial** to set Mastercam to metric.

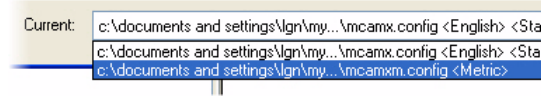
Preparing for a Tutorial

Before you start a tutorial, be sure you have completed the following tasks:

- 1 Start Mastercam using your preferred method:
 - ♦ Double-click Mastercam's desktop icon.


Or

- ♦ Launch Mastercam from the Windows Start menu.
- 2** Select the metric configuration file:
 - a** Select **Settings, Configuration** from Mastercam's menu.
 - b** Choose ...\\mcamxm.config <Metric> from the **Current** drop-down list.
 - c** Click **OK**.



If You Need More Help

There are many ways to get help with Mastercam, including the following:

- *Mastercam Help*—Access Mastercam Help by selecting **Help, Contents** from Mastercam's menu bar or by pressing [**Alt+H**] on your keyboard. Also, most dialog boxes and ribbon bars feature a Help button  that opens Mastercam Help directly to related information.
- *Online help*—You can search for information or ask questions on the Mastercam Web forum, located at www.emastercam.com. You can also find a wealth of information, including many videos, at www.mastercam.com and www.mastercamedu.com.
- *Mastercam Reseller*—Your local Mastercam Reseller can help with most questions about Mastercam.
- *Technical Support*—CNC Software's Technical Support department (860-875-5006 or support@mastercam.com) is open Monday through Friday from 8:00 a.m. to 5:30 p.m. USA Eastern Standard Time.
- *Documentation feedback*—For questions about this or other Mastercam documentation, contact the Technical Documentation department by email at techdocs@mastercam.com.
- *Mastercam University*—CNC Software sponsors Mastercam University, an affordable online learning platform that gives you 24/7 access to Mastercam training materials. Take advantage of more than 180 videos to master your skills at your own pace and help prepare yourself for Mastercam Certification. For more information on Mastercam University, please contact your Authorized Mastercam Reseller, visit www.mastercamu.com, or email training@mastercam.com.

Additional Documentation

You can find more information on using Mastercam in the following materials, located in the \Documentation folder of your Mastercam installation:

- *Mastercam X5 Installation Guide*
- *Mastercam X5 Administrator Guide*
- *Mastercam X5 Quick Start*
- *Mastercam X5 Reference Guide*

4 • FILES AND MASTERCAM

- *Mastercam X5 Transition Guide*
- *Mastercam X5 Quick Reference Card*
- *Mastercam X5 Wire Getting Started Guide*
- *Version 9 to X Function Map*
- *Mastercam X5 NCI & Parameter Reference*
- *Mastercam X5 Post Debugger User's Guide*

LESSON 1

Opening Files

Files that can be opened with Mastercam include not only Mastercam's own MCX files, but also files saved from other software packages or from previous versions of Mastercam. From within Mastercam, you can even open specific files into third-party editors of your choice.

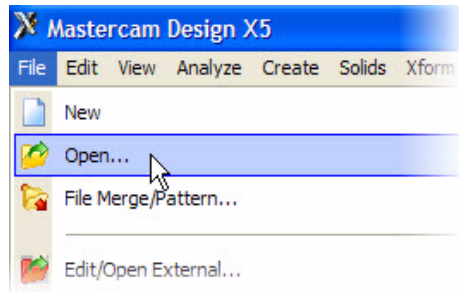
Lesson Goals

- Open files from a previous version of Mastercam.
- Open files from other software packages.
- Select an editor for external (non-importable) files.

Exercise 1: Opening a Mastercam Version 9 File

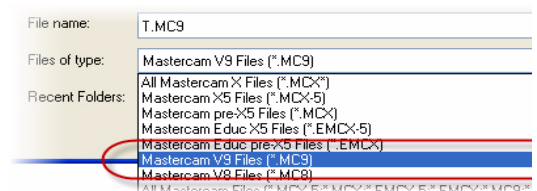
Moving your Mastercam Version 9 parts to Mastercam X is as easy as opening a file, as this exercise demonstrates.

- 1 Choose **File, Open** from Mastercam's menu bar.

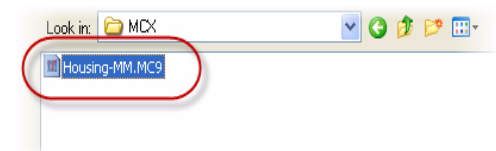


- 2 In the Open dialog box, set **Files of type** to **Mastercam V9 Files (*.MC9)**.

The dialog box now displays only MC9 files.

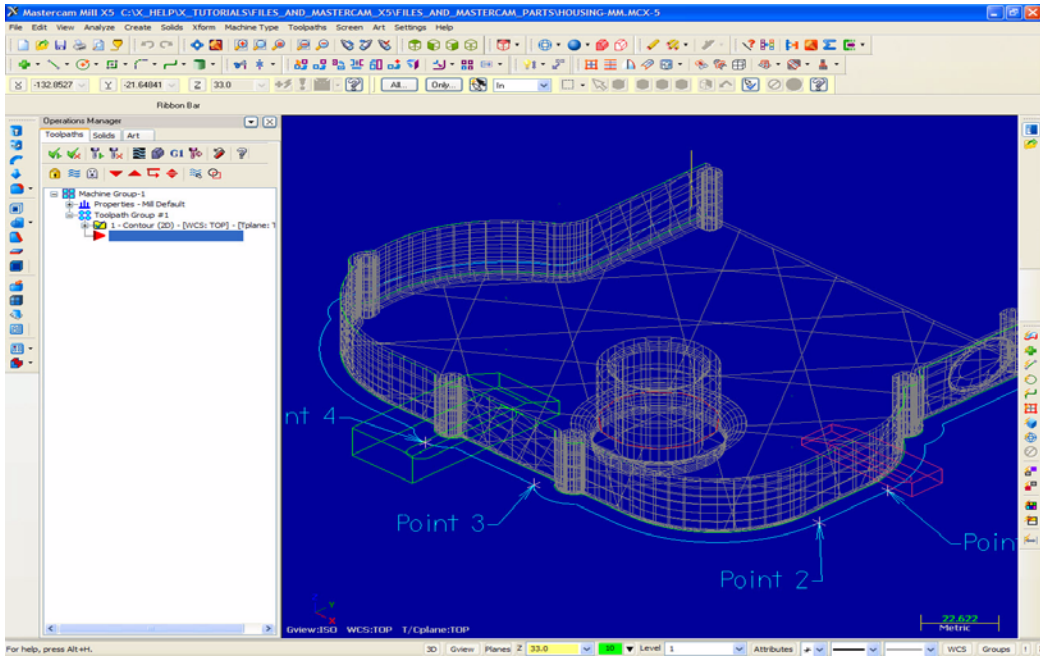


- 3 Navigate to **Housing_MM.MC9**, which was provided with this tutorial.
- 4 Double-click the file, or single-click the file and click **Open**.



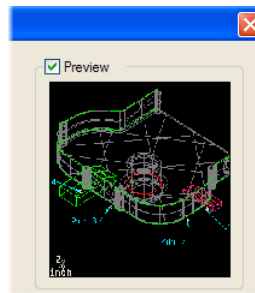
*Note: If you did not switch to a metric configuration file, Mastercam prompts you to switch to metric. Click **OK** to continue.*

Mastercam converts and loads the file, including not only geometry, but also machining operations, as seen in the following picture.



TIPS:

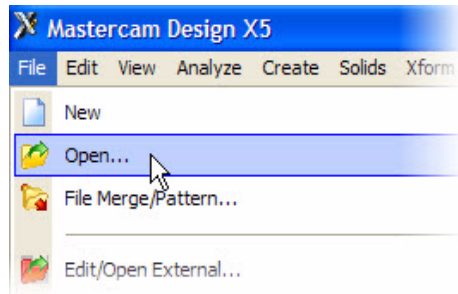
- Select the Open dialog box's **Preview** check box to see a thumbnail of the currently selected file.
- To convert all the files in a folder, choose **File, Update Folder** from the Mastercam menu.



Exercise 2: Opening Other File Types

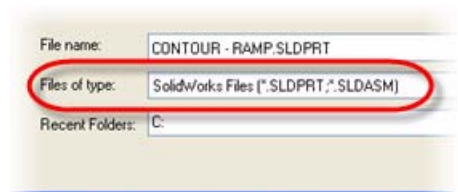
Importing files from other applications such as SolidWorks is similar to opening native Mastercam files. You might, however, need to specify how Mastercam imports elements of the file. In this exercise, you learn how file importing works, as you convert a SolidWorks file to a Mastercam part.

- 1 Choose **File, Open** from Mastercam's menu bar.



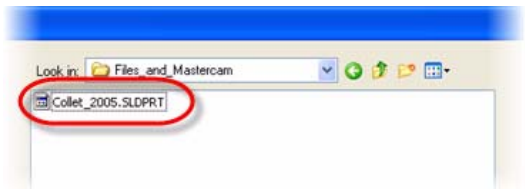
- 2 In the Open dialog box, set **Files of type** to **SolidWorks Files (*.SLDPRT;*.SLDASM)**.

The dialog now displays only SolidWorks parts.

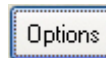


- 3 Navigate to the tutorial part `Collet_2005.SLDPRT`.

- 4 Click the file to select it. (*Do not double-click.*)

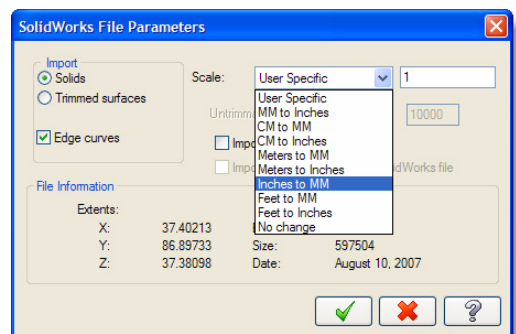


- 5 Click the **Options** button.

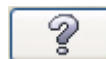


- 6 In the SolidWorks File Parameters dialog box, set **Scale** to **Inches to MM**.

This setting converts an inch file to a millimeter file.



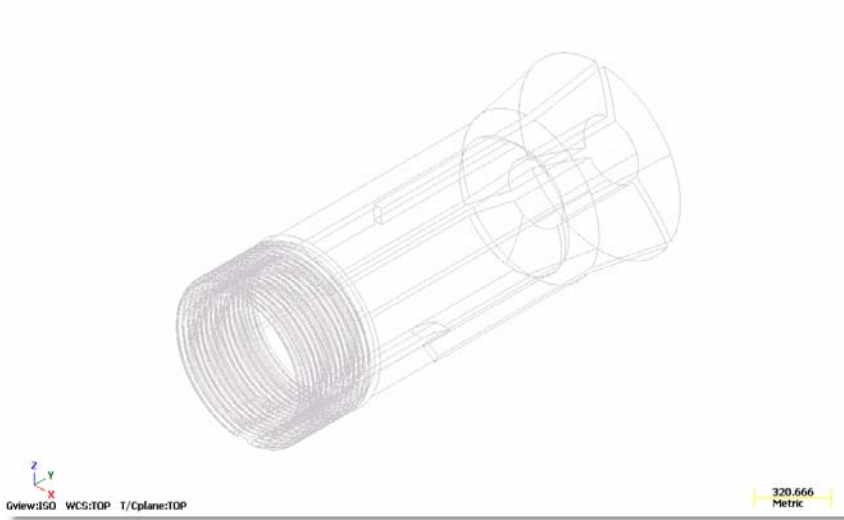
- 7 Notice the other SolidWorks parameters that you can control. To learn more, click the dialog box's **Help** button.



- 8 Click **OK** to close the dialog box and finalize your choices.

- 9 In the Open dialog box, click **Open**. Mastercam converts and opens the part.

- 10** From the Mastercam menu, choose **View, Standard Views, Isometric (WCS)** and then **View, Fit** to see the entire part in Mastercam's graphics window.

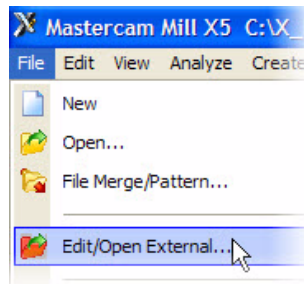


For more information on views, please refer to Mastercam Help or to the *Working in the Graphics Window* tutorial, also part of the *Getting Started* series.

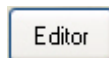
Exercise 3: Setting the Default Editor

Sometimes, you need to open a file type not supported by Mastercam. In this instance, you can choose an editor to associate with the file. This exercise shows how.

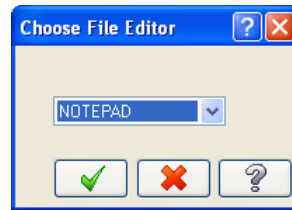
- 1** From the Mastercam menu, choose **File, Edit/Open External**.



- 2** In the Open dialog box, click the **Editor** button.

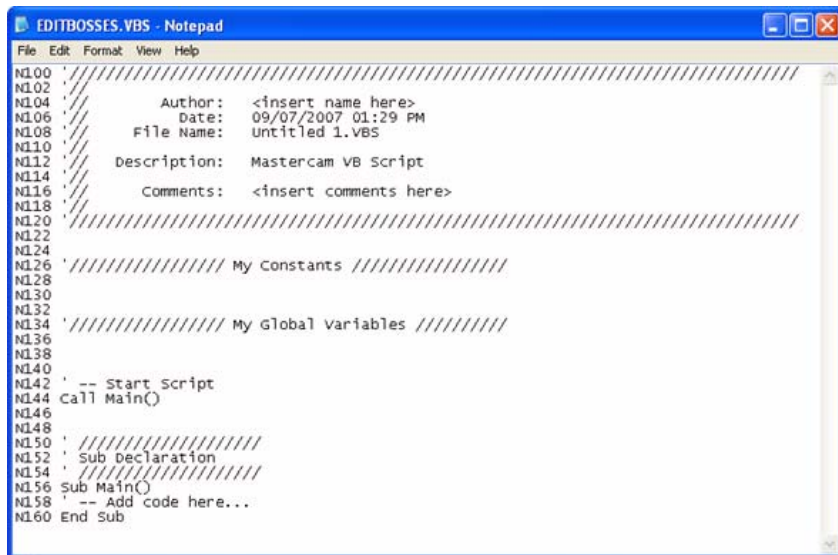
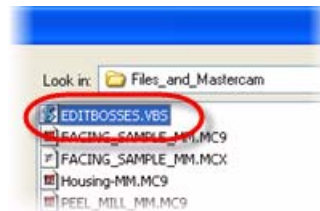


- 3 In the Choose File Editor dialog box, select **Notepad** from the drop-down list, and click **OK**.



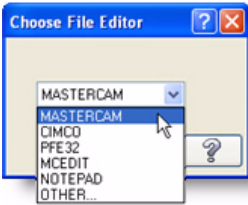
- 4 Navigate to and select the tutorial file `EditBosses.vbs`, and click **Open**.

Mastercam opens the file in Notepad, as shown in the following picture.

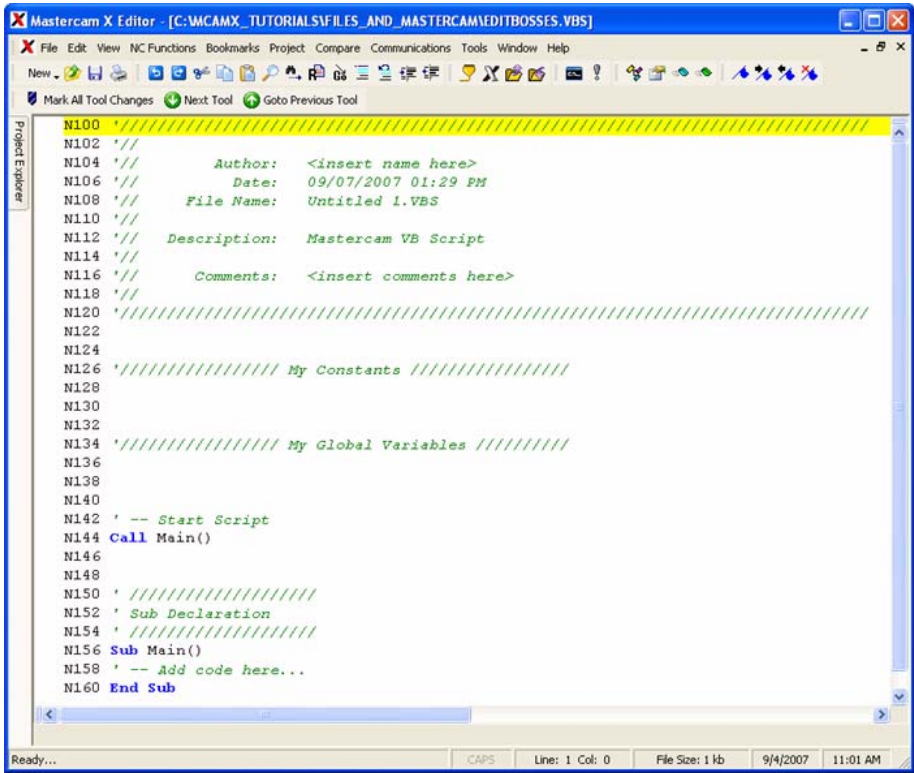


- 5 Close Notepad by clicking the red **X** button in the upper right corner of the dialog box.
- 6 Choose **File, Edit/Open External** again.
- 7 In the Open dialog box, click the **Editor** button.

- 8 Select **Mastercam** from the drop-down list, and click **OK**.
- 9 Navigate to and select the tutorial file `EditBosses.vbs` again, and click **Open**.



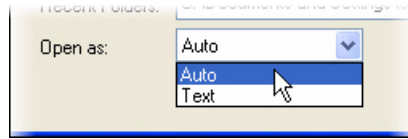
- 10 Mastercam now opens the file in Mastercam X Editor, as shown in the following picture.



- 11 Close Mastercam Editor by clicking the red **X** button in the upper right corner of the dialog box.



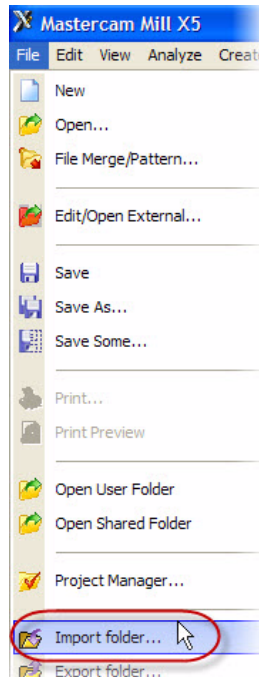
TIP: To automatically open a file with its associated editor (for example, to open a .DOC file with Microsoft Word), set the Open dialog box's **Open as** option to Auto.



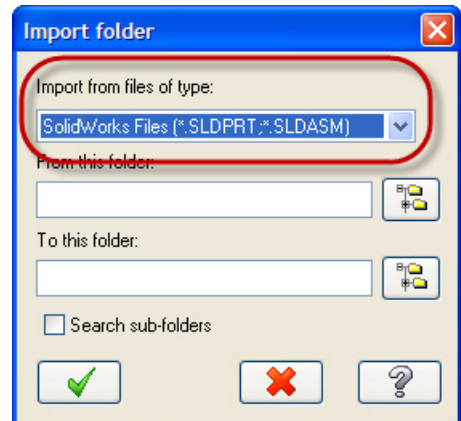
Exercise 4: Importing Multiple Files

When you have many files to import into Mastercam, you can convert them all at once using the **Import folder** command.

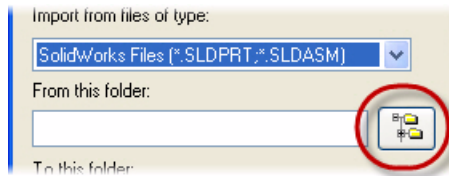
- 1 From the Mastercam menu, choose **File, Import folder**.



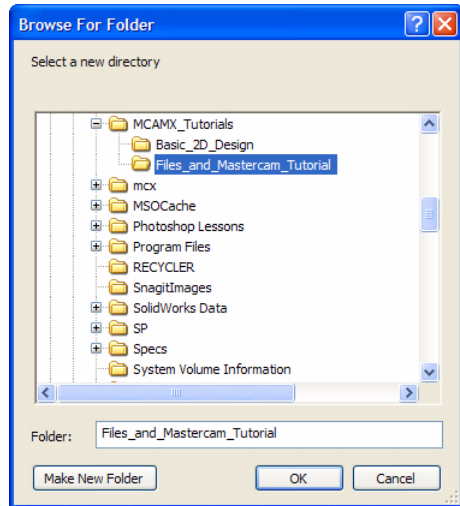
- 2 In the **Import folder** dialog box, select **SolidWorks Files (*.SLDPRT;*.SLDASM)** from the **Import from files of type** drop-down list.



- 3 Click the **Browse** button to the right of the **From this folder** box.



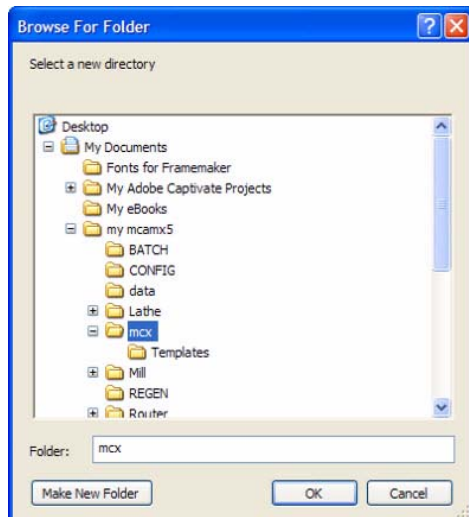
- 4 Use the Browse For Folder dialog box to select the location where you stored the tutorial files, and click **OK**.



- 5 Click the **Browse** button to the right of the **To this folder** box.

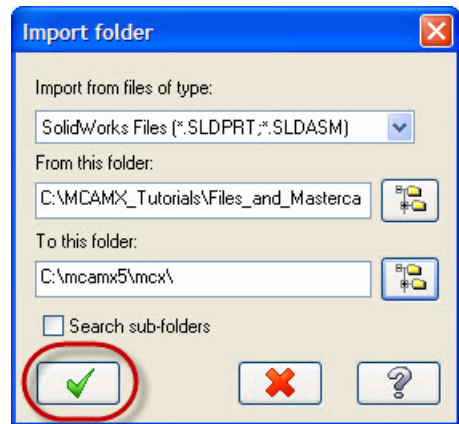


- 6 Select your Mastercam installation's \mcx directory located within your \My Documents\my mcamx5 folder, and click **OK**.



- 7 Click **Import** in the **Import folder** dialog box.

Mastercam converts all SolidWorks files in the selected tutorial files directory, but does not display the converted files in the graphics window. (In this instance, there is only one.) You can find the resulting MCX files in the \mcx folder.



LESSON 2

Saving Files

Usually, you use the **File, Save** or **File, Save As** commands to save a Mastercam part file. As you see in this lesson, however, Mastercam can save files in several different formats.

Lesson Goals

- Save only selected entities to a file.
- Set up Mastercam to save files automatically.
- Keep backups of previous versions of your files.
- Store AutoSave and Backup settings for future Mastercam sessions.

Exercise 1: Saving Patterns (Save Some)

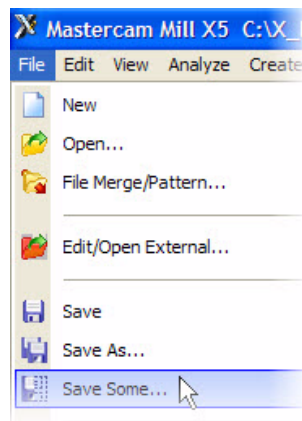
A pattern is a set of reusable entities. For example, you may have a bolt that you use in many different parts. By saving that bolt as a pattern, you can merge it with your other parts as needed. For more information on patterns, please see Mastercam Help.

When you save a Mastercam part, you can choose to save the entire file or to save only selected entities. Saving a set of selected entities is one way to create a pattern from a part file. This exercise demonstrates the **File, Save Some** command, which lets you choose the entities to save.

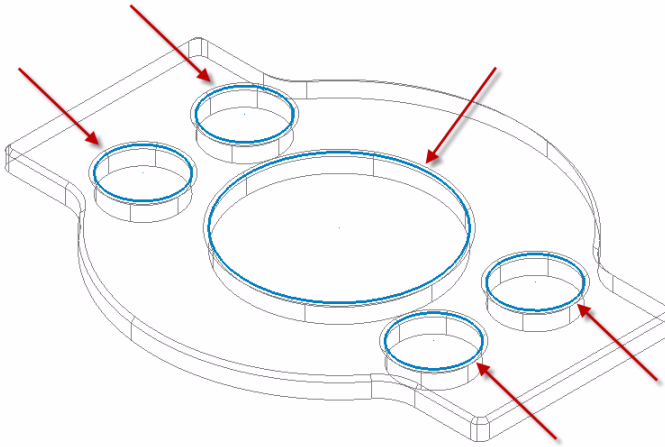
- 1 Open the tutorial part 2D_CHAMFER_MM.MCX-5.

*Note: In the Open dialog box, you might first need to change your **Files of type** setting back to **Mastercam X5 Files (*.MCX-5)**.*

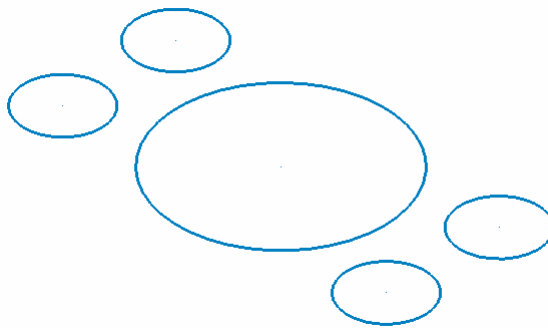
- 2 Choose **File, Save Some** from Mastercam's menu bar.



- 3 Click the five arcs shown in the picture below. The arcs change color once they are selected.



- 4 Press **[Enter]** to accept the selection.
- 5 In the Save As dialog box's **File name** field, enter 2D_CHAMFER_ARCS.MCX-5.
- 6 Click **Save**, or press **[Enter]**, to save the file. Mastercam saves only the selected arcs.
- 7 Open 2D_CHAMFER_ARCS.MCX-5, and notice that it contains only the arcs that you selected.

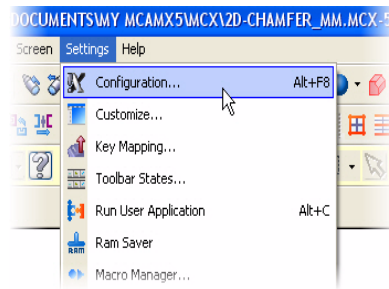


*Note: If you are prompted to save changes to the 2D_CHAMFER_MM.MCX-5 file, choose **No**.*

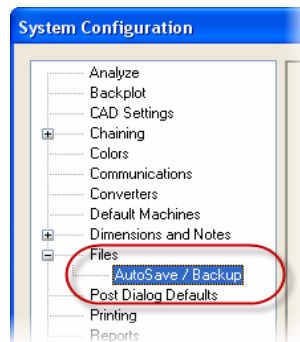
Exercise 2: Setting Up AutoSave and Backup

When working on a part, you might forget to save the file as often as you should. Luckily, Mastercam can save your work for you, at intervals that you specify. Mastercam can even save different versions of your files as backups. Complete the following exercise to see how Mastercam's AutoSave and Backup features work.

- 1 Choose **Settings, Configuration** from the Mastercam menu.

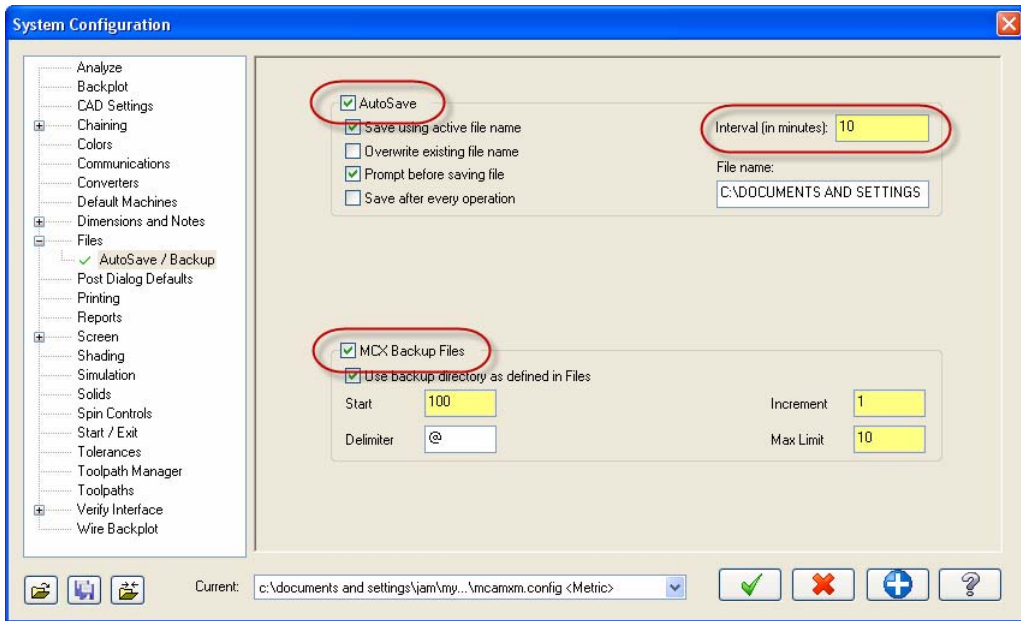


- 2 Expand the **Files** category in the System Configuration dialog box, and select the **AutoSave/Backup** subentry.

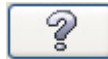


- 3 Perform the following actions:

- ♦ Select the **AutoSave** check box to activate the AutoSave options.
- ♦ Type **10** into the **Interval (in minutes)** field.
- ♦ Select the **MCX Backup Files** check box to activate the automatic backup feature.



4 Click the **Help** button to learn more about the AutoSave and Backup options.



5 Close the Help window.

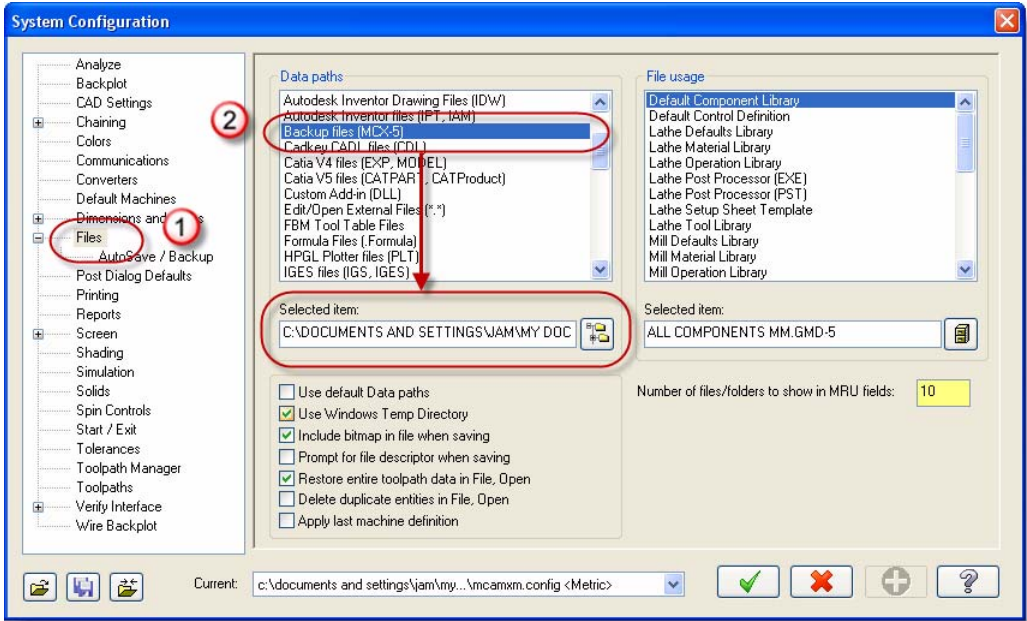
6 Click **OK** in the System Configuration dialog box, and answer **Yes** when Mastercam asks if you want to save your settings.

You have now set up Mastercam as follows:

- ◆ Mastercam will save your work automatically every 10 minutes.
- ◆ Mastercam will keep the 10 most recent versions of your file.
- ◆ Mastercam will use the new AutoSave and Backup settings for all sessions that use this configuration file.



TIP: You can find your backup files in the folder specified on the Files page of the System Configuration dialog box, as shown below. Click the numbered items to see the path displayed in the Selected Item box.



LESSON 3

Exporting Files

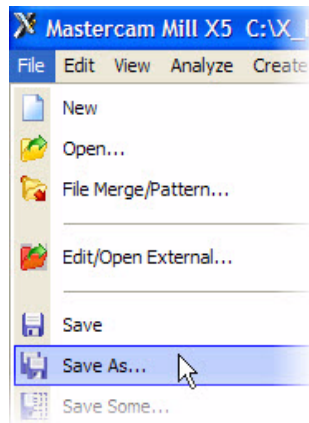
Exporting a file from Mastercam to a format compatible with another software package is similar to saving a regular Mastercam file. When exporting, however, you might need to set a few options so that you get the type of file you expect. (In most cases, you need only select the software version to which you are exporting the file.) In this lesson, you learn to convert files from one format to another.

Lesson Goals

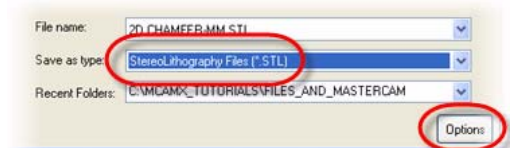
- Save a single file in a format other than Mastercam MCX.
- Set file options for specific file types.
- Convert a set of files to another format.

Exercise 1: Exporting a single file

- 1 Open the tutorial file 2D_CHAMFER_MM.MCX-5.
- 2 Choose **File, Save As** from Mastercam's menu.



- 3 In the Save As dialog box, select **StereoLithography Files (*.STL)** in the **Save as type** drop-down list.
- 4 Click the **Options** button.



- 5 In the **Save as an STL File** dialog box, select the **ASCII** option.



- 6 Click the dialog box's **Help** button to learn more about the STL options.



- 7 Close the Help window.

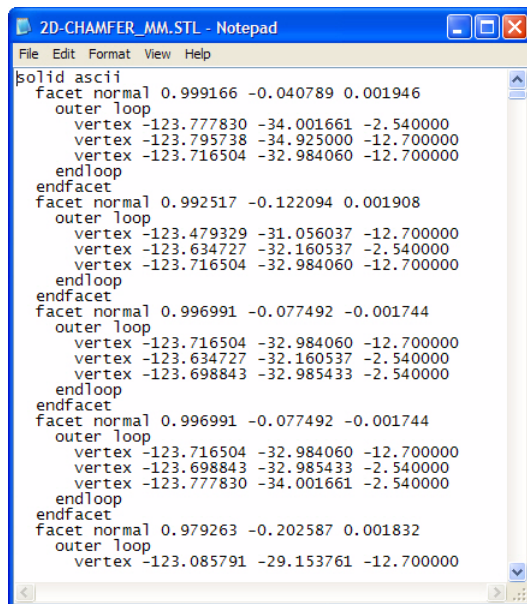
- 8 Click **OK** to close the **Save as an STL File** dialog box.

- 9 Click **Save** in the Save As dialog box.

Mastercam saves the file in ASCII StereoLithography format.



TIP: Because the Stereolithography file is ASCII, you can view it with any text editor, such as Notepad, as seen below.



```

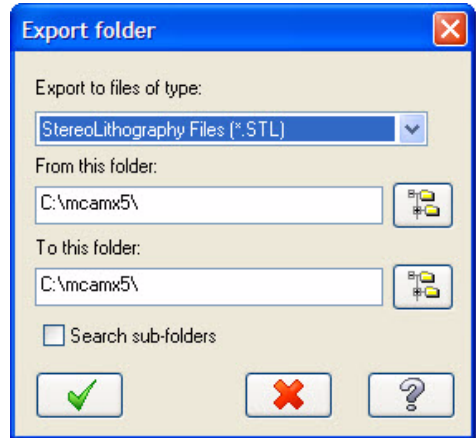
solid ascii
  facet normal 0.999166 -0.040789 0.001946
    outer loop
      vertex -123.777830 -34.001661 -2.540000
      vertex -123.795738 -34.925000 -12.700000
      vertex -123.716504 -32.984060 -12.700000
    endloop
  endfacet
  facet normal 0.992517 -0.122094 0.001908
    outer loop
      vertex -123.479329 -31.056037 -12.700000
      vertex -123.634727 -32.160537 -2.540000
      vertex -123.716504 -32.984060 -12.700000
    endloop
  endfacet
  facet normal 0.996991 -0.077492 -0.001744
    outer loop
      vertex -123.716504 -32.984060 -12.700000
      vertex -123.634727 -32.160537 -2.540000
      vertex -123.698843 -32.985433 -2.540000
    endloop
  endfacet
  facet normal 0.996991 -0.077492 -0.001744
    outer loop
      vertex -123.716504 -32.984060 -12.700000
      vertex -123.698843 -32.985433 -2.540000
      vertex -123.777830 -34.001661 -2.540000
    endloop
  endfacet
  facet normal 0.979263 -0.202587 0.001832
    outer loop
      vertex -123.085791 -29.153761 -12.700000

```

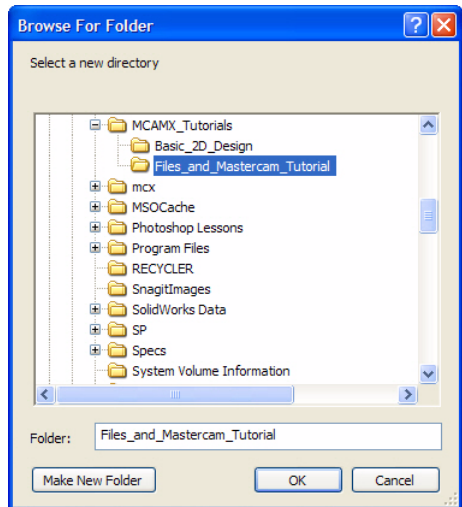
Exercise 2: Exporting multiple files

When you have many Mastercam files to export to a different format, you can convert them simultaneously using the **Export folder** command. This exercise demonstrates how this powerful function works.

- 1 Choose **File, Export folder** from Mastercam's menu.
- 2 In the **Export folder** dialog box, choose **StereoLithography Files (*.STL)** from the **Export to files of type** drop-down list.



- 3 Click the **Browse** button to the right of the **From this folder** box.
- 4 Use the Browse For Folder dialog box to select the directory where you stored the tutorial parts, and click **OK**.



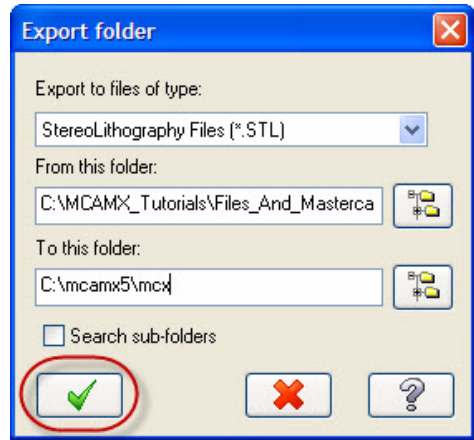
- 5 Click the **Browse** button to the right of the **To this directory** box.



- 6 Select your Mastercam installation's \mcx directory, and click **OK**.

- 7 Click **Export** in the **Export folder** dialog box.

Mastercam converts the files in the selected tutorial folder. You can find the resulting STL files in your \mcx folder.



Conclusion

Congratulations! You have completed the *Files and Mastercam* tutorial. Now that you have mastered the skills in this tutorial, we encourage you to explore Mastercam's other features and functions. Additional tutorials may be available in this or other series. Please contact your authorized Mastercam Reseller for further training.

**Attention! Updates may be available.
Go to Mastercam.com/Support for the latest downloads.**



cnrc software, inc.

671 Old Post Road
Tolland, CT 06084 USA
www.mastercam.com