

Mastercam X⁴ Wire

Fast. Flexible. Reliable.

X4

Powerful Part Modeling

Mastercam's streamlined CAD engine makes design work easier than ever before. Each piece of geometry you create is "live," letting you quickly modify it until it's exactly what you want.

Mastercam gives your shop the best possible foundation for fast and efficient wire cutting.

Tools to Make Programming Easier

Efficient wire EDM cutting means more than just programming a wirepath. Mastercam Wire gives you a set of tools that impact your entire process.

CNC Software, Inc. is committed to bringing environmentally friendly and socially responsible practices to our industry.

The brochure you are reading has been condensed to decrease paper consumption. These are some of Mastercam's most important highlights, but there's much more information online.

- Fully associative wirepaths are linked with your geometry. Modify any element of the job and immediately get updated wirepaths without starting over.
- Mastercam's CAD File Change Recognition tracks files from Mastercam or any other CAD system and will show you what's been changed for easy wirepath updating.
- User-customizable wire power libraries store power settings and other registers for rough and skim passes.
- Mastercam includes all-new support for Agie EDM with Agievision controls. Simply choose an Agievision AWF Wire Machine Definition and you'll see parameter pages that anyone familiar with Agievision will instantly recognize.
- See your part as it will come off the machine with solid model wirepath verification.

Efficient EDM Programming

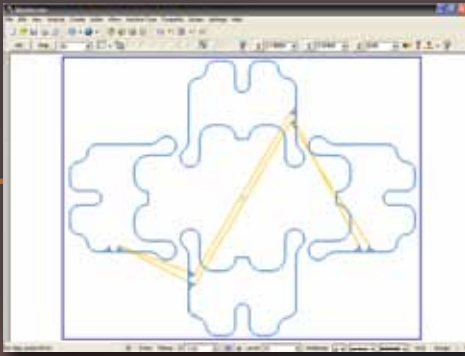
Mastercam Wire delivers a streamlined set of programming tools, including:

- 2-axis contour, with or without taper angle.
- Efficient no-core cutting.
- 4-axis automatic or manual synching, and automatic skim and reverse cuts.
- 4-axis surface finish by chordal deviation.
- 4-axis interpolation support (G2/G3).
- Straight and tapered cut (with or without land) from either direction.
- Contour multiple parts using a single window selection.
- Automatic maximum taper/UV travel detection.
- Automatically create an outside loop to ensure corners are not rounded off.
- Automatic wirepath corner filleting.
- Move and copy wirepaths for easy part repetition.
- Modify control settings, corner types, and taper angles at any point in a contour.
- Create efficient lead-ins and lead-outs with optional lead trimming.
- Apply tapers before or after a vertical wirepath.
- Click and dynamically drag a machining start point to anywhere on your model.
- Use wirepath filtering to significantly reduce the program size.
- Automatic tabs with user-definable stop types.
- No Drop Out tab option helps avoid slivers.
- Run tab cutoff passes after each part or after all parts are done.
- Easily create tabs on open contours.
- Go to www.MastercamWire.com for more.



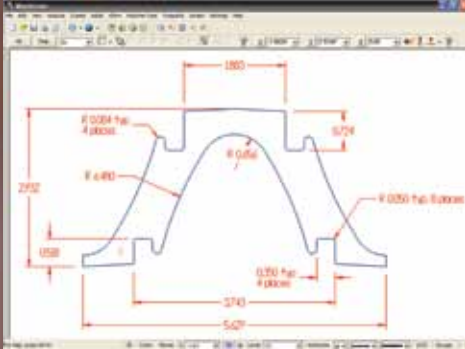
"Mastercam Wire lets us make quick modifications to our different jobs on the fly, saving time and money. It does a lot of the work for you, making it one of the easiest CAD/CAM packages to use."

*Matt Berube
CNC Programmer – Mold Designer
Ferron Mold and Tool, LLC
Dayville, CT*

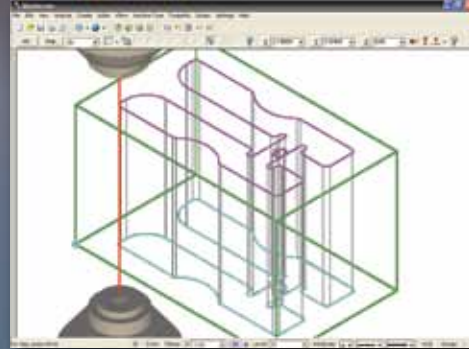


Mastercam simplifies 2- and 4-axis nested programming.

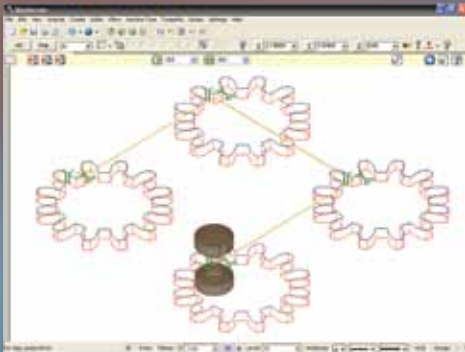
X4



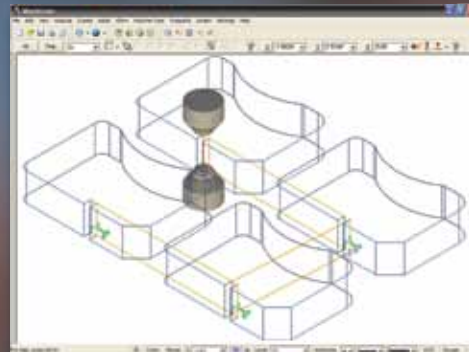
Fast, efficient CAD tools ensure quick design.



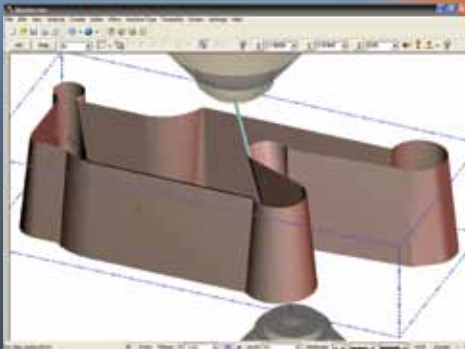
Fast 2-axis contouring.



Streamline your multiple-cut jobs.



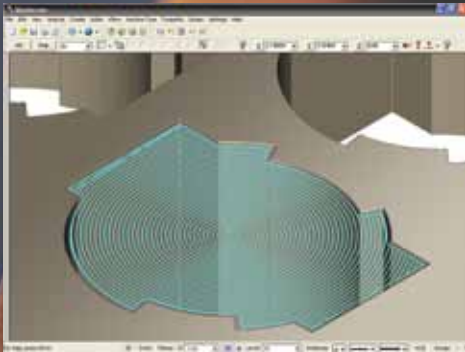
Tab control makes it easy to cut multiple parts with complete control over when the tab is cut.



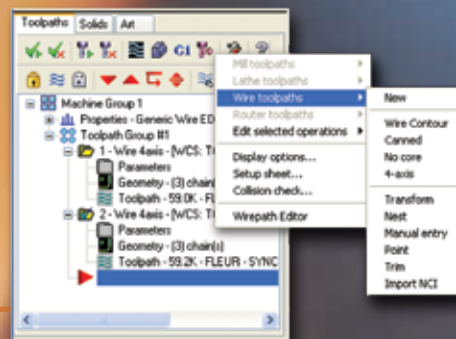
Powerful 4-axis contouring with automatic reverse and skim cuts.



Mastercam creates a smart link between a part and its wirepaths. This associativity means that if there are any changes to the part, you can easily update all wirepaths.



Run operations unattended with efficient no-core cutting.



Mastercam's Operations Manager delivers a fast, efficient way to manage your jobs.

Specialized Options

Very often that extra CAD or CAM tool makes a specific job easier, faster, and more profitable.

Mastercam's "open" architecture allows specialists around the world to create a wide variety of specialized add-in options for these occasions. See a full list at www.Mastercam.com/Products/Addins or ask your Mastercam Reseller for details.

Other powerful CAD/CAM packages available from Mastercam:



Mastercam Mill

Industry-leading milling package



Mastercam Lathe

Fast, flexible CNC turning



Mastercam Router

Quick and easy CNC routing



Mastercam® For SolidWorks®

NC programming within SolidWorks



Mastercam Art

Turn flat line art into artistic 3D work



Mastercam Solids

Powerful Parasolid®-based part modeling



Mastercam University

Online Mastercam training



System Requirements

- **Processor:** 1.5 GHz (minimum) 32-bit Intel®-compatible processor; 64-bit Intel®-compatible processors are supported.
- **Operating System:** Windows® XP, Windows Vista® (Business or Ultimate), or Windows® 7 (Professional or Ultimate) including the latest service packs and recommended updates; Microsoft .NET 3.5 Framework (installed with Mastercam)
- **Memory:** 1 GB (minimum) 1.7 GB available hard disk space.
- **Graphics:** 128 MB OpenGL-compatible graphics card (minimum).
- **Monitor:** 1024 x 768 at 96 DPI (minimum).
- **Mouse:** Windows-compatible 2-button or 3-button mouse (or with middle mouse wheel).

Mastercam
cnc software, inc.

671 Old Post Road, Tolland, CT 06084 USA
(800) 228-2877 • (860) 875-5006 • Fax (860) 872-1565
www.mastercam.com • mcinfo@mastercam.com

Mastercam is a registered trademark of CNC Software, Inc. ©Copyright 1983-2009. All rights reserved.
SolidWorks is a registered trademark of DS SolidWorks Corporation.